

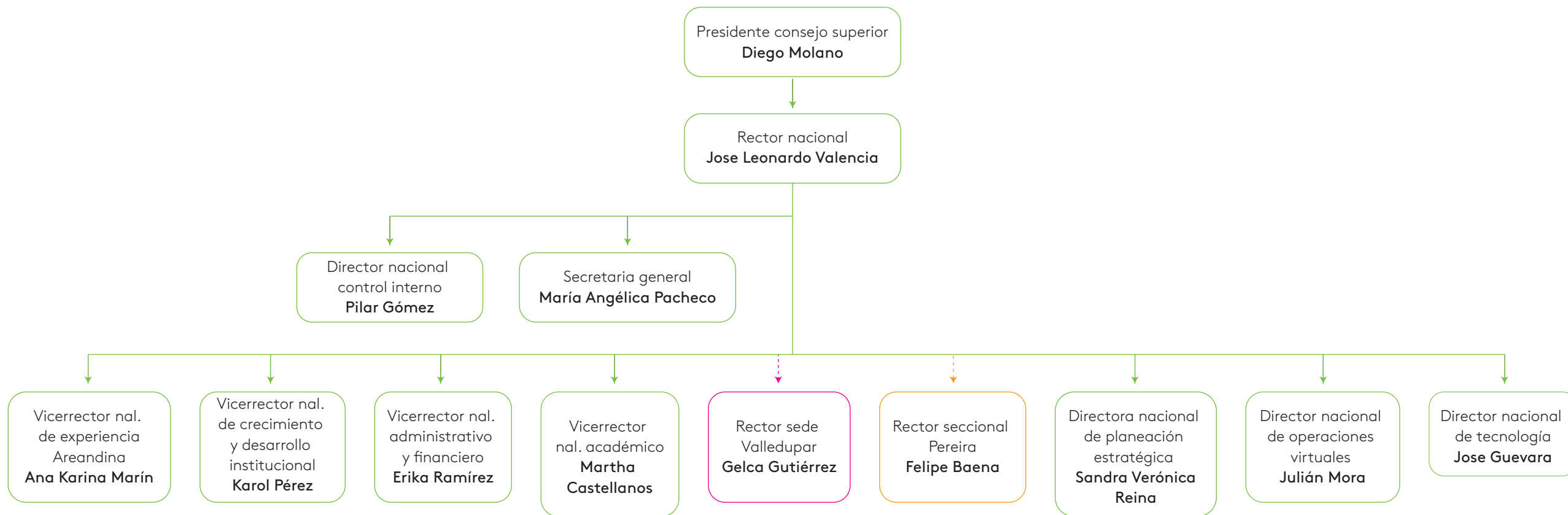


**Estructura
organizacional
Areandina**

ORGANIGRAMA



RECTORÍA NACIONAL





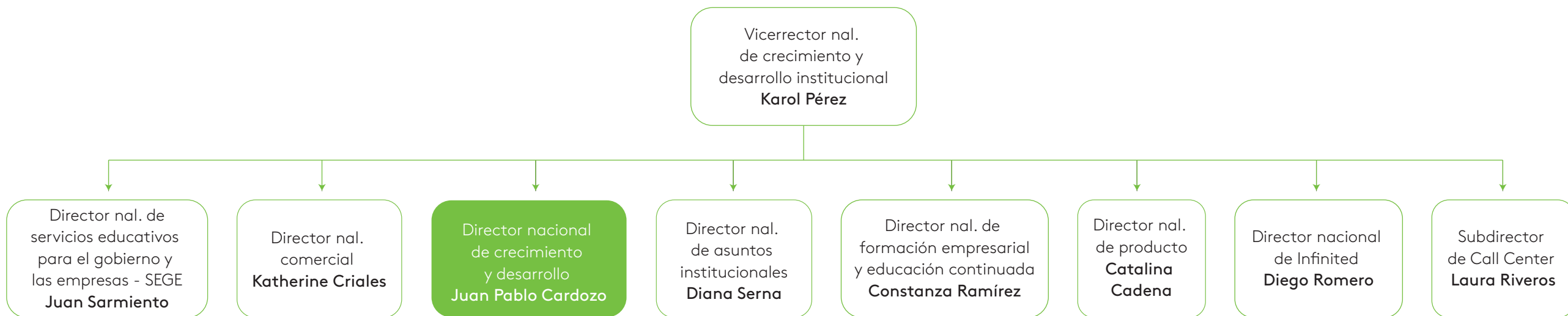


SECRETARÍA GENERAL



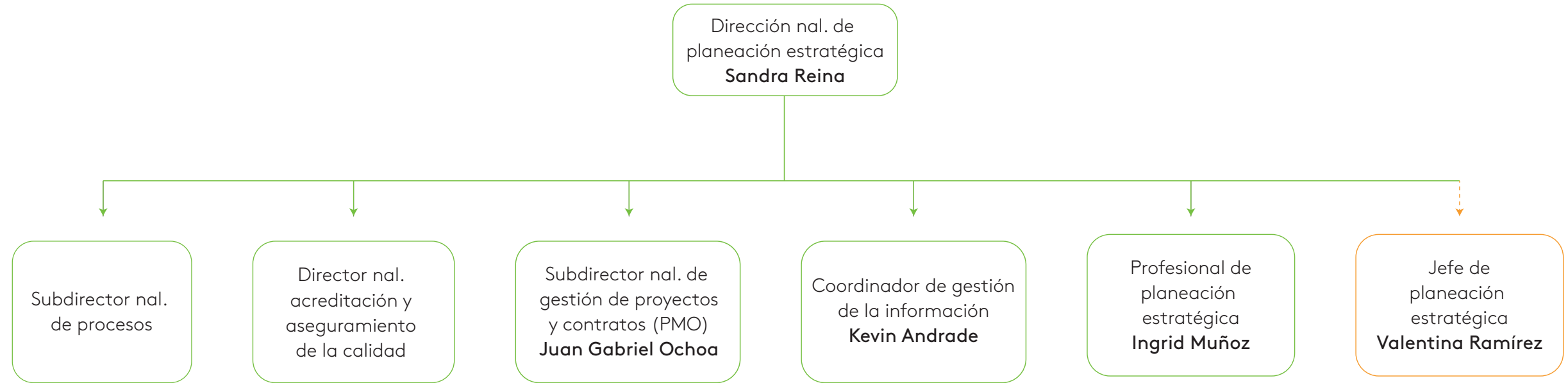


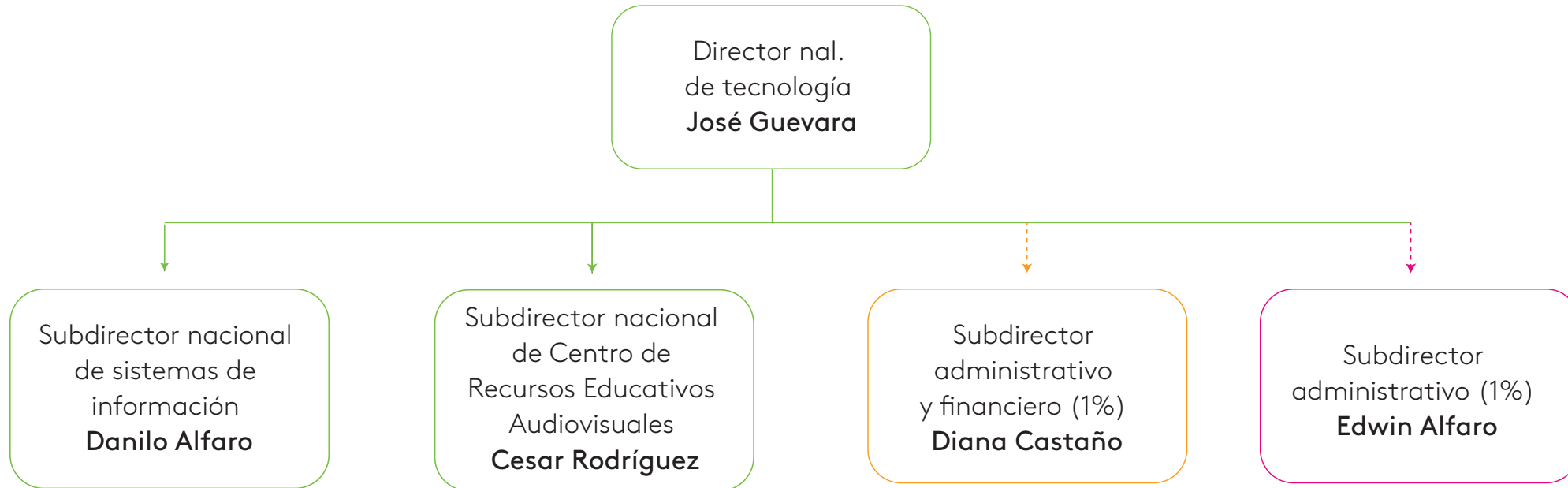
VICERRECTORÍA NAL. DE CRECIMIENTO Y DESARROLLO INSTITUCIONAL





DIRECCIÓN NACIONAL DE PLANEACIÓN ESTRATÉGICA

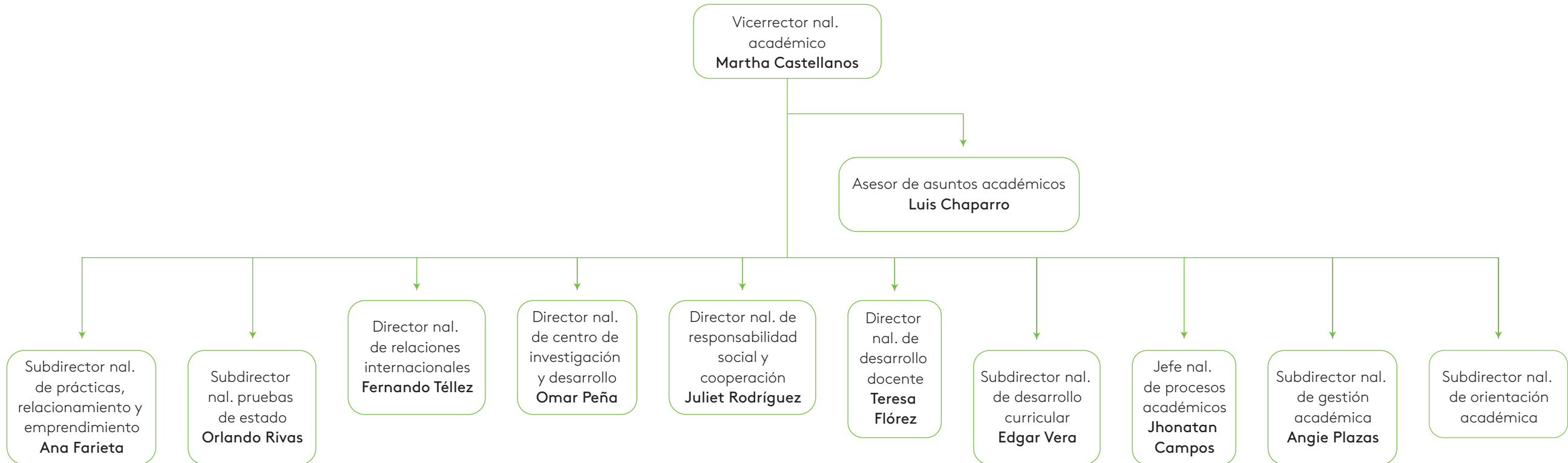






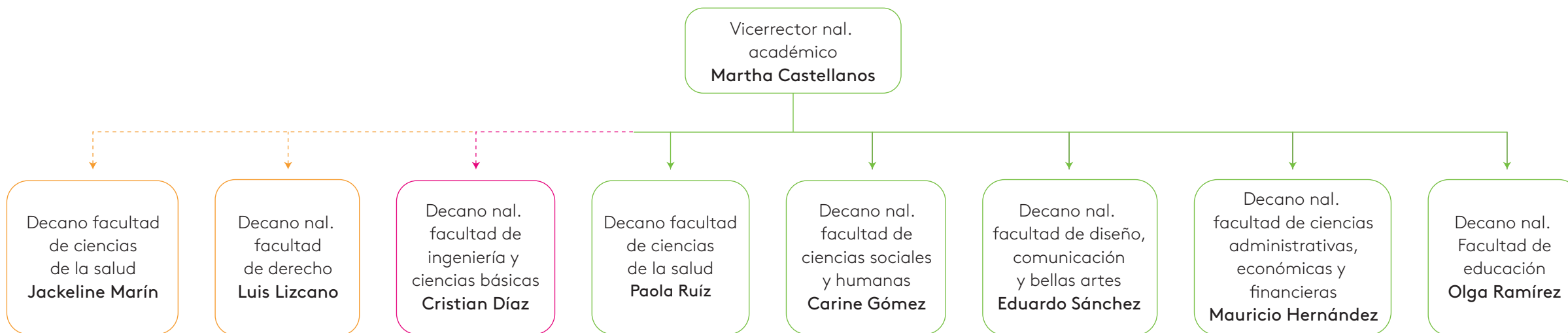


VICERRECTORÍA NAL. ACADÉMICA (DIRECCIONES)



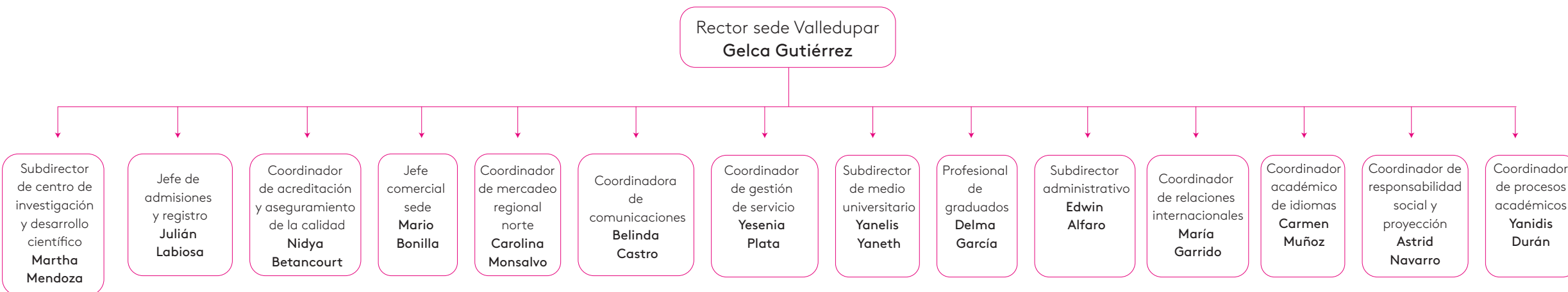


VICERRECTORÍA NAL. ACADÉMICA (DECANATURAS)



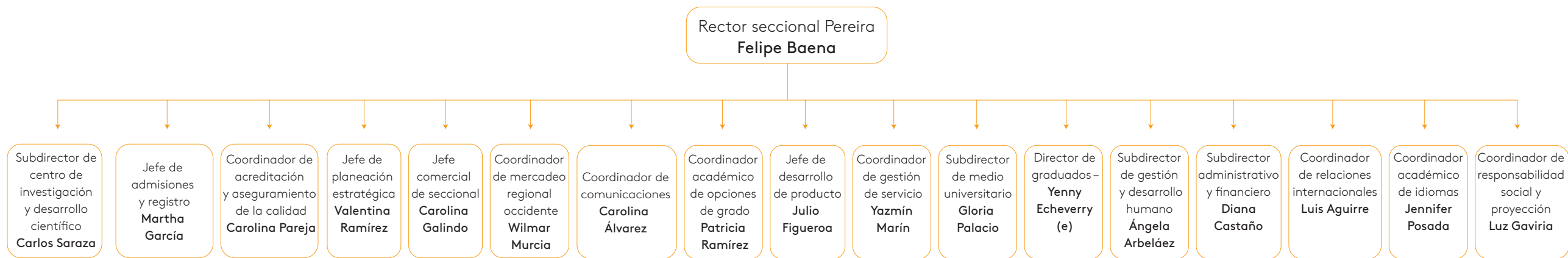


ESTRUCTURA SEDE VALLEDUPAR





ESTRUCTURA SECCIONAL PEREIRA



The logo for AREANDINA features the word "AREANDINA" in a bold, white, sans-serif font. The letter 'E' is stylized with a horizontal line through its center. The background is a solid green color with faint, concentric white circles and vertical lines that create a subtle pattern.

Fundación Universitaria del Área Andina